

This document is an adaptation of the owner's manual by using graphic method.

1. Basic functions

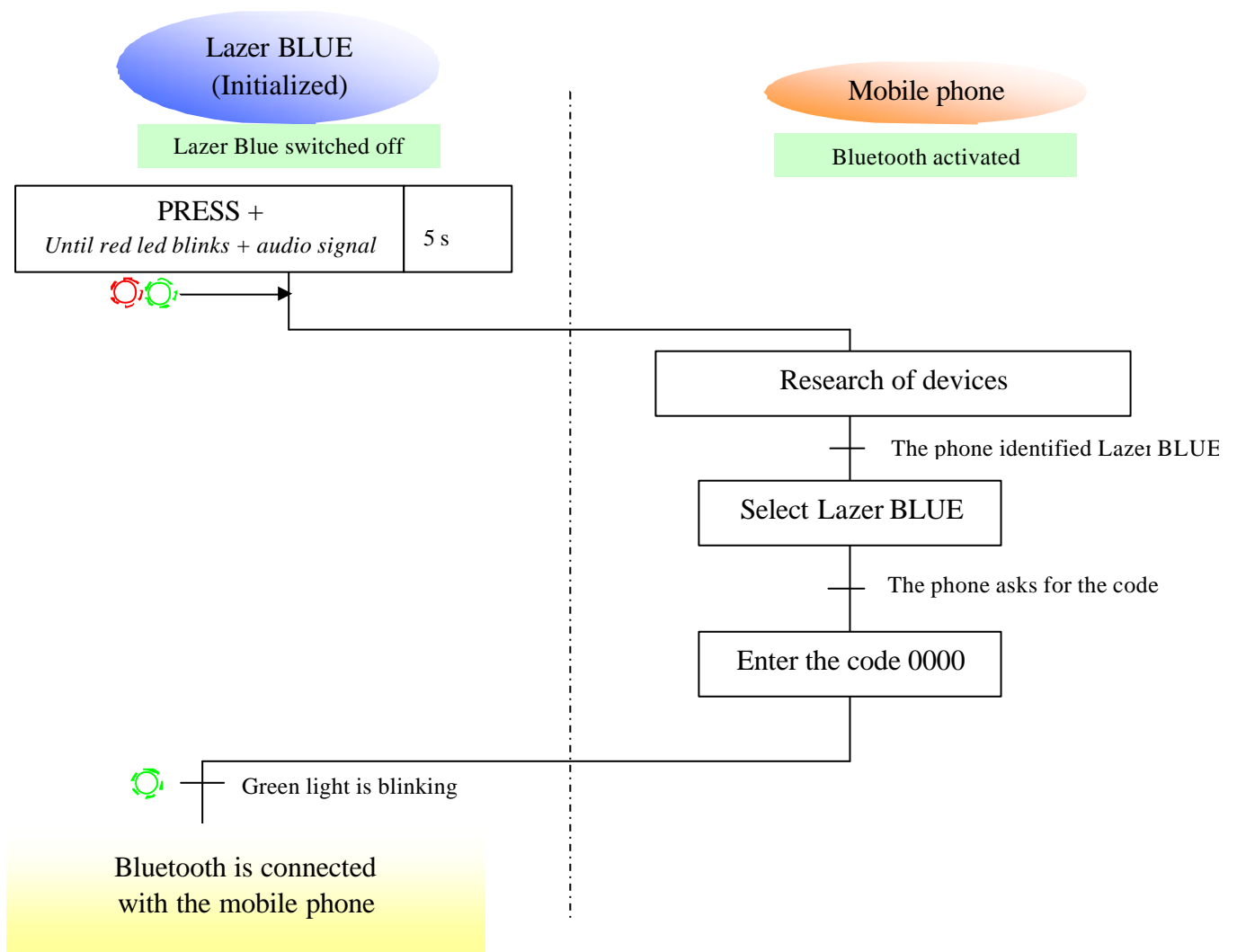
To switch on or to switch off your Lazer BLUE:

PRESS + <i>Until red led blinks + audio signal</i>	5 s
--	-----

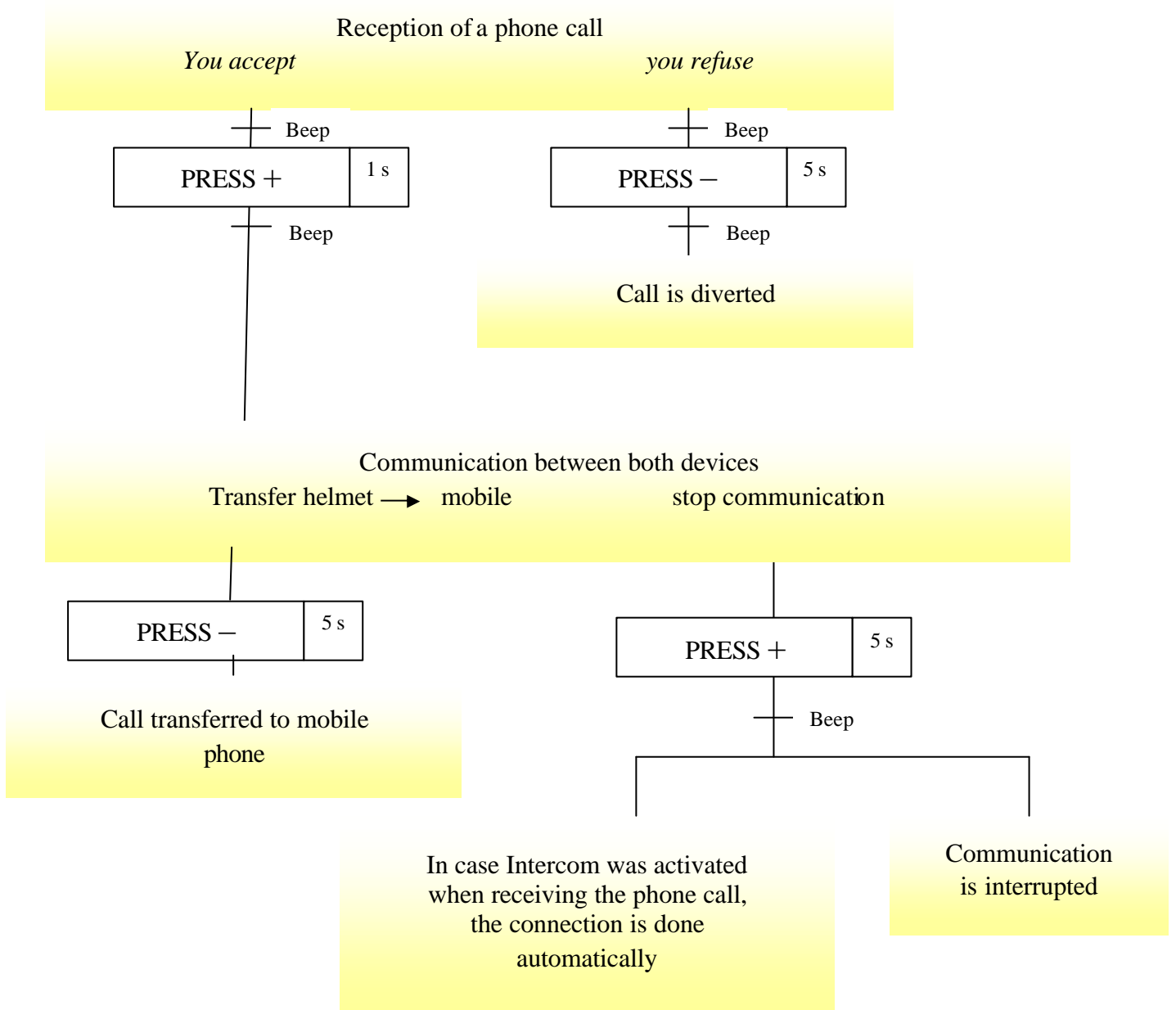
To turn up or down the volume :

PRESS + or - <i>Until audio signal</i>	1 s
--	-----

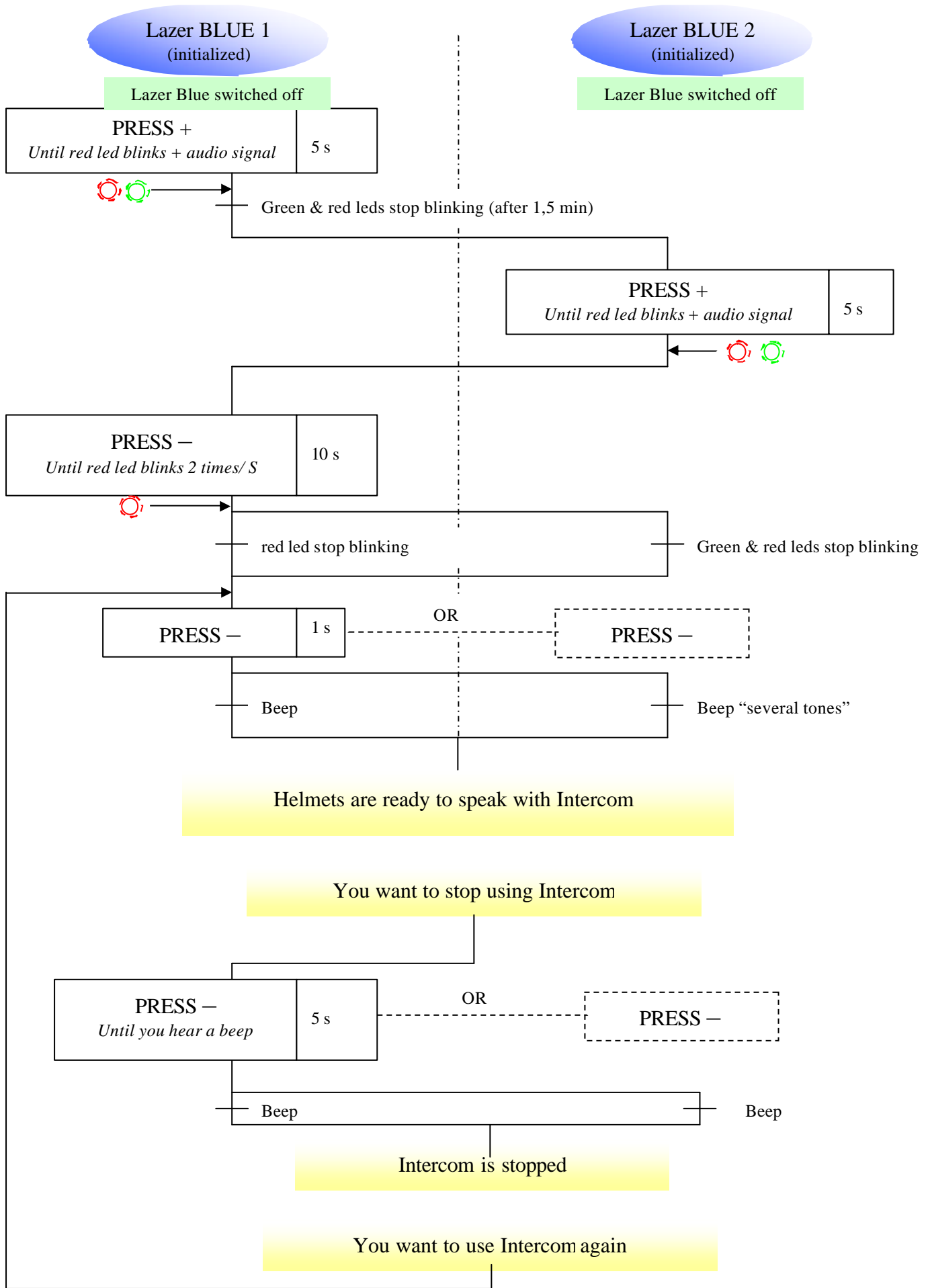
2. Link between a Z-Com and a mobile phone



3. Reception of a phone call

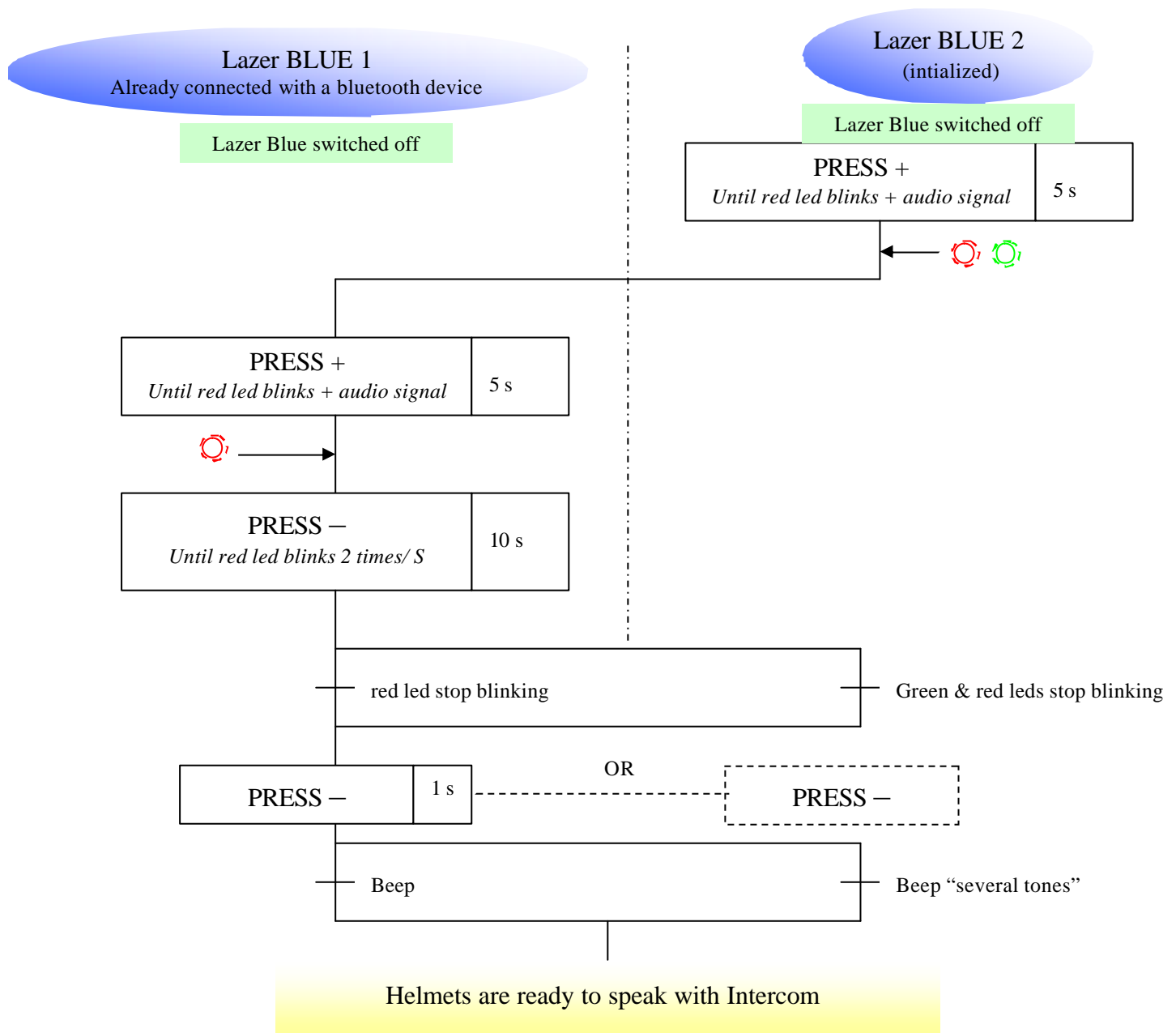


4. Intercom between 2 Z-COM



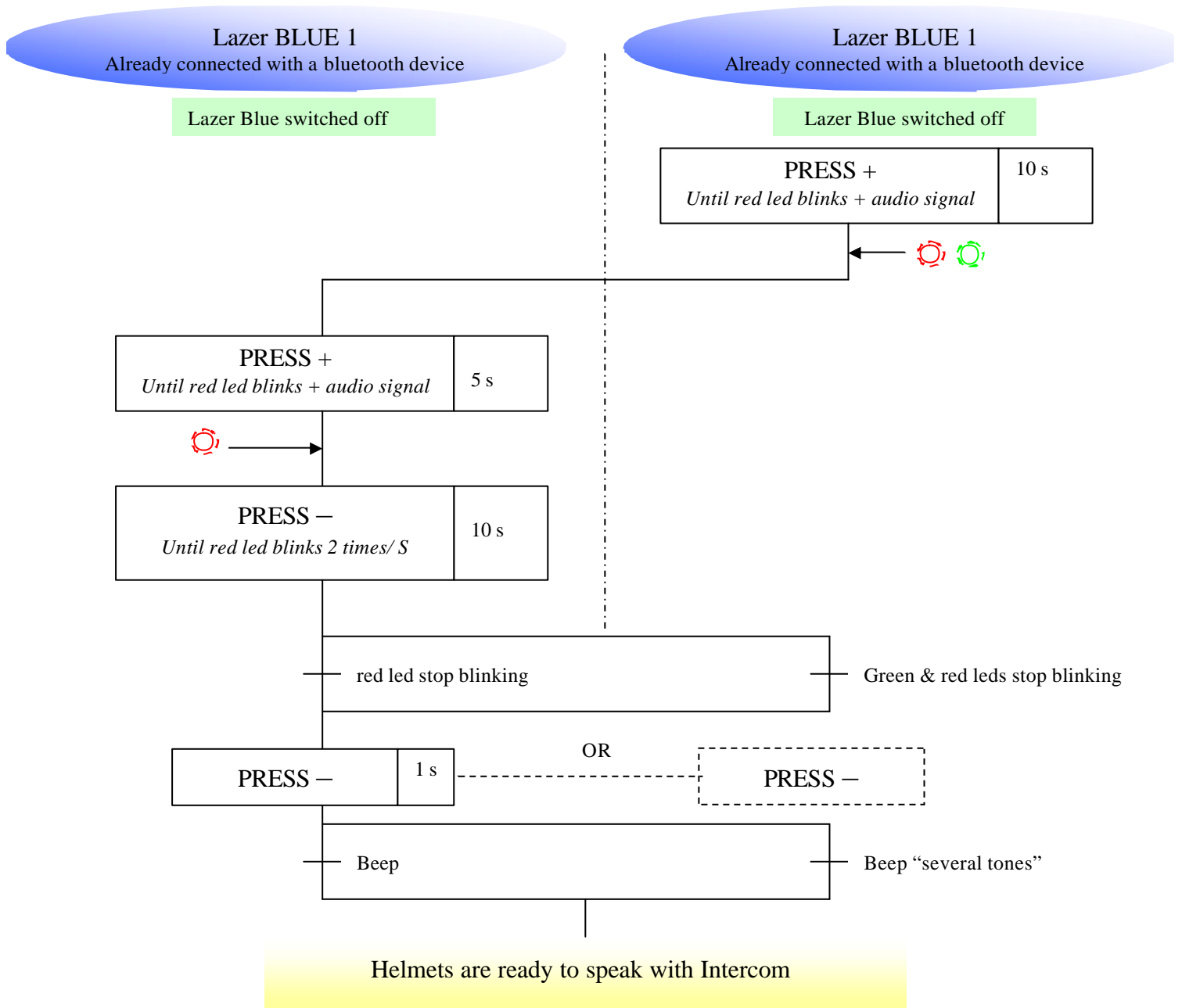
5. Intercom between 2 Z-COM after a mobile phone connection

A. Only one helmet already connected to a mobile phone.



B. Both helmets already connected to a mobile phone.

In the case where **both helmets have been previously connected with a mobile phone**, First action consists in pressing + button during 15 s until red and green leds blink, instead of 5 s as mentioned above.



7. Reset operation

